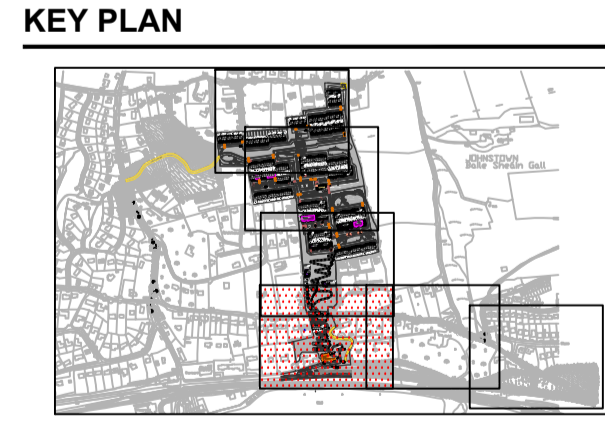


- NOTES**
- THIS DRAWING IS TO BE READ IN CONJUNCTION WITH ALL OTHER RELEVANT ARCHITECTURAL AND ENGINEERING DRAWINGS. ANY DISCREPANCIES, ERRORS OR OMISSIONS TO BE BROUGHT TO THE ATTENTION OF THE DESIGNER.
 - ALL DIMENSIONS TO BE CHECKED BY THE CONTRACTOR ON SITE PRIOR TO COMMENCEMENT OF WORKS.
 - AECOM LIMITED TO BE INFORMED BY THE CONTRACTOR OF ANY DISCREPANCIES PRIOR TO THE COMMENCEMENT OF WORKS ON SITE.
 - DIMENSIONS OF ALL BOUNDARIES AND ADJOINING ROADS TO BE CHECKED ON SITE PRIOR TO COMMENCEMENT OF WORKS.
 - DO NOT SCALE. ALL MEASUREMENTS AND COORDINATES TO BE CHECKED ON SITE.
 - REFER TO LANDSCAPE ARCHITECTS DRAWINGS FOR DETAILS OF OPEN SPACE AND LEVELS.
 - THE PROPOSED SURFACE WATER SEWERS SHALL BE CONSTRUCTED IN ACCORDANCE WITH THE SPECIFICATION OF SECTION 3 OF "RECOMMENDATIONS FOR SITE DEVELOPMENT WORKS FOR HOUSING AREAS" (DEPARTMENT OF ENVIRONMENT & LOCAL GOVERNMENT 1998).
 - ALL FOUL WATER DETAILS TO BE IN ACCORDANCE WITH THE IRISH WATER INFRASTRUCTURE STANDARD DETAILS AND CODE OF PRACTICE FOR WASTEWATER INFRASTRUCTURE.
 - SURFACE WATER & FOUL WATER SEWER PIPES LESS THAN 1.2m BELOW THE ROAD SURFACE SHOULD BE PROTECTED FROM DAMAGE BY PROVIDING A 200mm CONCRETE HUNCH ENCASMENT NOT LESS THAN 100mm THICK & HAVING MOVEMENT JOINTS FORMED WITH COMPRESSIVE BOARD AT EACH SOCKET OR SLEEVE JOINT FACE.
 - ATTENUATION PROPOSALS SHALL BE IN ACCORDANCE WITH THE REQUIREMENT OF CORK COUNTY COUNCIL.
 - EXISTING INVERT LEVELS TO BE VERIFIED ON SITE BEFORE COMMENCING CONSTRUCTION.

ISSUE/REVISION

| I/R | DATE | DESCRIPTION |
|-----|------------|---------------------|
| 0 | 03.12.2021 | ISSUED FOR PLANNING |



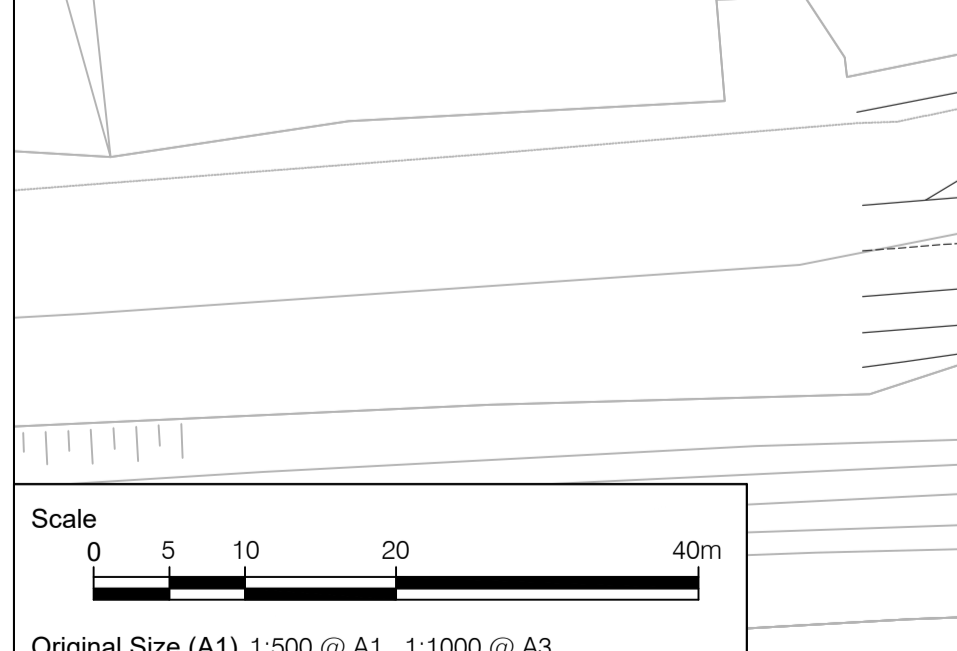
LEGEND:

- EXISTING SURFACE WATER SEWER.....
- PROPOSED SURFACE WATER SEWER AND MANHOLE.....
- PROPOSED SURFACE WATER ATTENUATION TANK.....
- EXISTING SURFACE WATER SEWER.....
- PROPOSED Ø150-225mm CONCRETE SEWER PIPES AS PER IRISH WATER WASTEWATER CODE OF PRACTICE SECTION 3.13.1.....
- PROPOSED Ø150-225mm CONCRETE SEWER PIPE WITH CONCRETE SURROUND AS PER IRISH WATER STD-WW-08.....
- PRIVATE INSPECTION CHAMBERS AS PER IRISH WATER STD-WW-03.....

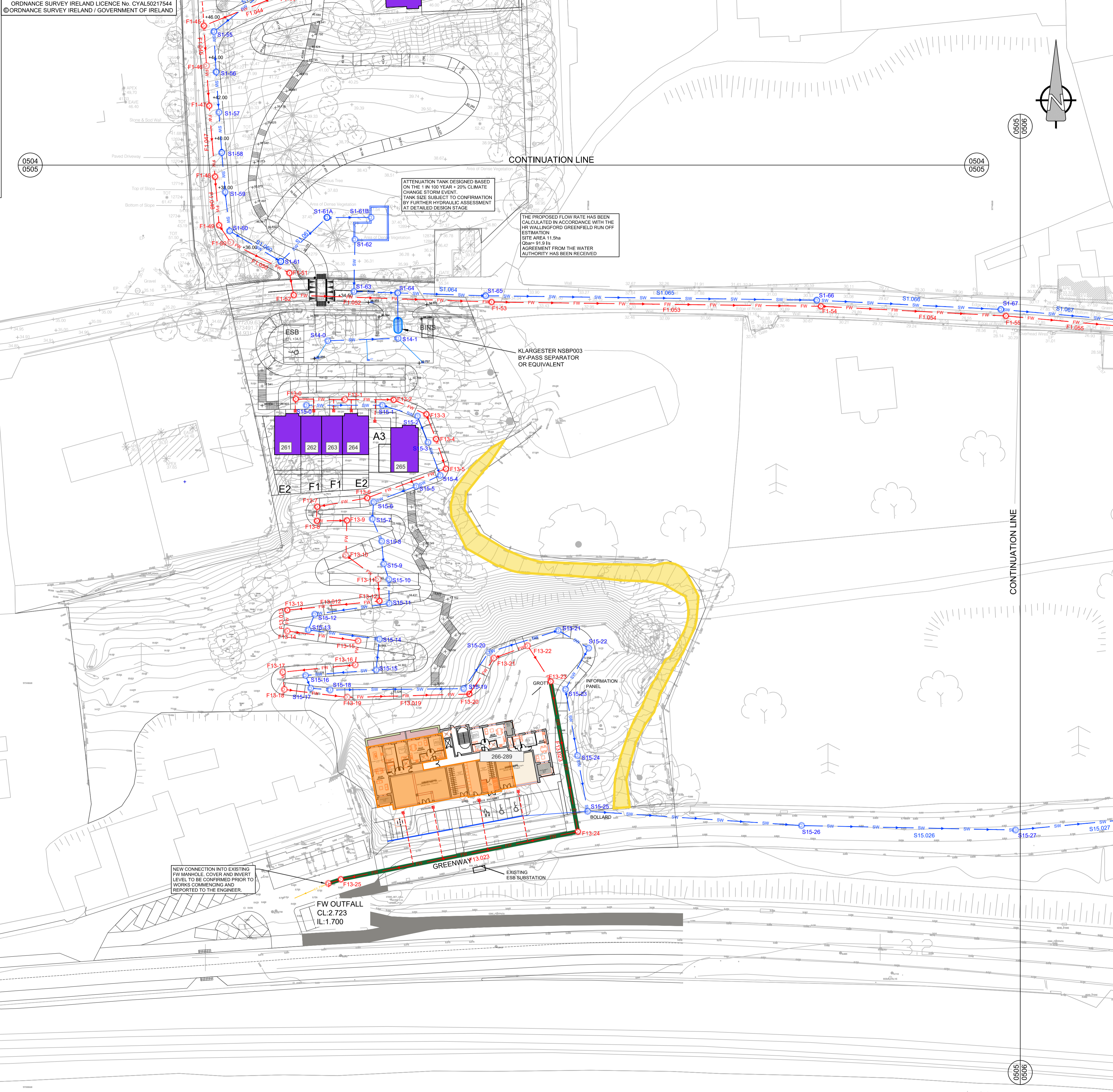


| PN | USMH | Length (m) | Slope (1:X) | USCL (m) | USIL (m) | DSIL (m) | Dia (mm) |
|---------|--------|------------|-------------|----------|----------|----------|----------|
| F13.000 | F13-0 | 12.201 | 60.1 | 28.400 | 27.300 | 27.097 | 150 |
| F13.001 | F13-1 | 12.063 | 60.0 | 27.830 | 26.400 | 26.199 | 150 |
| F13.002 | F13-2 | 8.847 | 60.0 | 27.200 | 26.199 | 26.052 | 150 |
| F13.003 | F13-3 | 6.553 | 40.0 | 27.707 | 25.600 | 25.436 | 150 |
| F13.004 | F13-4 | 7.779 | 20.0 | 26.300 | 25.200 | 24.811 | 150 |
| F13.005 | F13-5 | 20.776 | 20.0 | 25.800 | 24.500 | 23.461 | 150 |
| F13.006 | F13-6 | 12.564 | 20.0 | 24.500 | 23.200 | 22.572 | 150 |
| F13.007 | F13-7 | 3.502 | 20.0 | 23.600 | 22.500 | 22.325 | 150 |
| F13.008 | F13-8 | 7.465 | 50.0 | 23.400 | 22.000 | 21.851 | 150 |
| F13.009 | F13-9 | 8.549 | 15.0 | 22.900 | 20.800 | 20.230 | 150 |
| F13.010 | F13-10 | 9.972 | 25.0 | 21.000 | 19.000 | 18.601 | 150 |
| F13.011 | F13-11 | 5.377 | 13.0 | 19.787 | 17.100 | 16.686 | 150 |
| F13.012 | F13-12 | 22.976 | 20.0 | 17.500 | 15.500 | 14.351 | 150 |
| F13.013 | F13-13 | 5.168 | 20.0 | 16.200 | 14.200 | 13.942 | 150 |
| F13.014 | F13-14 | 17.706 | 50.0 | 15.900 | 13.900 | 13.546 | 150 |
| F13.015 | F13-15 | 5.965 | 15.0 | 15.000 | 13.000 | 12.602 | 150 |
| F13.016 | F13-16 | 18.054 | 30.0 | 13.735 | 12.000 | 11.398 | 150 |
| F13.017 | F13-17 | 4.311 | 20.0 | 12.400 | 11.000 | 10.784 | 150 |
| F13.018 | F13-18 | 15.739 | 13.0 | 12.300 | 10.100 | 8.889 | 150 |
| F13.019 | F13-19 | 30.184 | 20.9 | 9.650 | 8.800 | 7.358 | 150 |
| F13.020 | F13-20 | 10.751 | 50.0 | 9.100 | 7.300 | 7.085 | 150 |
| F13.021 | F13-21 | 8.966 | 20.0 | 8.203 | 7.000 | 6.552 | 150 |
| F13.022 | F13-22 | 10.539 | 20.0 | 7.496 | 5.300 | 4.773 | 150 |
| F13.023 | F13-23 | 37.749 | 20.0 | 5.600 | 4.000 | 2.113 | 150 |
| F13.024 | F13-24 | 59.935 | 225.3 | 2.700 | 2.038 | 1.772 | 225 |
| F13.025 | F13-25 | 3.181 | 227.2 | 2.725 | 1.772 | 1.758 | 225 |

| PN | USMH | Length (m) | Slope (1:X) | USCL (m) | USIL (m) | DSIL (m) | Dia (mm) |
|---------|--------|------------|-------------|----------|----------|----------|----------|
| S15.000 | S15-0 | 18.804 | 40.0 | 28.300 | 27.000 | 26.530 | 225 |
| S15.001 | S15-1 | 9.098 | 25.0 | 27.500 | 26.400 | 26.036 | 225 |
| S15.002 | S15-2 | 6.980 | 25.0 | 27.600 | 25.700 | 25.421 | 225 |
| S15.003 | S15-3 | 8.735 | 25.0 | 26.300 | 25.000 | 24.651 | 225 |
| S15.004 | S15-4 | 6.537 | 20.0 | 25.700 | 24.600 | 24.273 | 225 |
| S15.005 | S15-5 | 11.237 | 20.0 | 25.300 | 24.200 | 23.638 | 225 |
| S15.006 | S15-6 | 4.169 | 10.0 | 24.500 | 22.200 | 21.783 | 225 |
| S15.007 | S15-7 | 5.981 | 20.0 | 22.500 | 21.000 | 20.701 | 225 |
| S15.008 | S15-8 | 5.594 | 20.0 | 21.700 | 19.500 | 19.220 | 225 |
| S15.009 | S15-8 | 4.032 | 25.2 | 20.300 | 18.500 | 18.340 | 225 |
| S15.010 | S15-10 | 5.992 | 22.5 | 19.400 | 17.300 | 17.034 | 225 |
| S15.011 | S15-11 | 18.620 | 40.0 | 18.000 | 15.800 | 15.325 | 225 |
| S15.012 | S15-12 | 4.192 | 30.0 | 16.700 | 15.000 | 14.860 | 225 |
| S15.013 | S15-13 | 17.772 | 50.1 | 15.500 | 14.300 | 13.945 | 225 |
| S15.014 | S15-14 | 7.672 | 60.0 | 14.900 | 13.800 | 13.672 | 225 |
| S15.015 | S15-15 | 17.517 | 12.0 | 15.700 | 13.300 | 11.840 | 225 |
| S15.016 | S15-16 | 3.410 | 15.0 | 12.800 | 11.300 | 11.073 | 225 |
| S15.017 | S15-17 | 4.800 | 25.3 | 11.900 | 10.800 | 10.610 | 225 |
| S15.018 | S15-18 | 33.051 | 20.0 | 11.500 | 10.000 | 8.347 | 225 |
| S15.019 | S15-19 | 10.982 | 19.2 | 9.100 | 8.200 | 7.628 | 225 |
| S15.020 | S15-20 | 18.001 | 18.4 | 8.400 | 7.300 | 6.320 | 225 |
| S15.021 | S15-21 | 8.685 | 25.0 | 6.900 | 5.500 | 5.153 | 225 |
| S15.022 | S15-22 | 11.718 | 50.0 | 5.884 | 5.153 | 4.918 | 225 |
| S15.023 | S15-23 | 16.645 | 30.0 | 5.900 | 4.000 | 3.445 | 225 |
| S15.024 | S15-24 | 14.019 | 60.0 | 4.000 | 3.300 | 3.066 | 225 |
| S15.025 | S15-25 | 53.073 | 350.0 | 3.500 | 2.800 | 2.648 | 300 |
| S15.026 | S15-26 | 52.973 | 350.0 | 3.000 | 2.648 | 2.497 | 300 |
| S15.027 | S15-27 | 37.373 | 350.0 | 2.915 | 2.497 | 2.390 | 300 |
| S15.028 | S15-28 | 49.399 | 401.6 | 2.900 | 2.390 | 2.267 | 300 |
| S15.029 | S15-29 | 76.851 | 400.3 | 3.000 | 2.267 | 2.075 | 300 |
| S15.030 | S15-30 | 32.833 | 400.4 | 2.900 | 2.075 | 1.993 | 300 |
| S15.031 | S15-31 | 71.778 | 401.0 | 3.250 | 1.993 | 1.814 | 300 |
| S15.032 | S15-32 | 71.777 | 401.0 | 3.310 | 1.814 | 1.635 | 300 |
| S15.033 | S15-33 | 72.143 | 400.8 | 3.370 | 1.635 | 1.455 | 300 |



A PROPOSED DRAINAGE LAYOUT - (SHEET 5 OF 7)



Project Management Initials: Designer: JC Checked: AP Approved: EMcK ISO A1 594mm x 841mm
 Last saved by: ALLEN PRENDERGAST (2021-10-26) Last Plotted: 2021-12-03
 Filename: I:\EACOM\NET\COM\KUBIEBL\0592432-ACM-00-00-DR-CE-10-0505.DWG
 This drawing has been prepared for the use of AECOM's client. It may not be used, modified, reproduced or relied upon by third parties, except as agreed by AECOM, or as required by law. AECOM accepts no responsibility, and denies any liability whatsoever, to any party that uses or relies on this drawing without AECOM's express written consent. Do not scale this document. All measurements must be obtained from the stated dimensions.